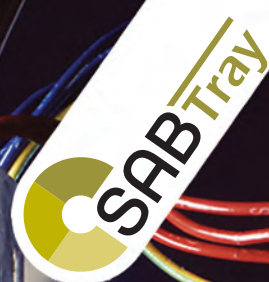
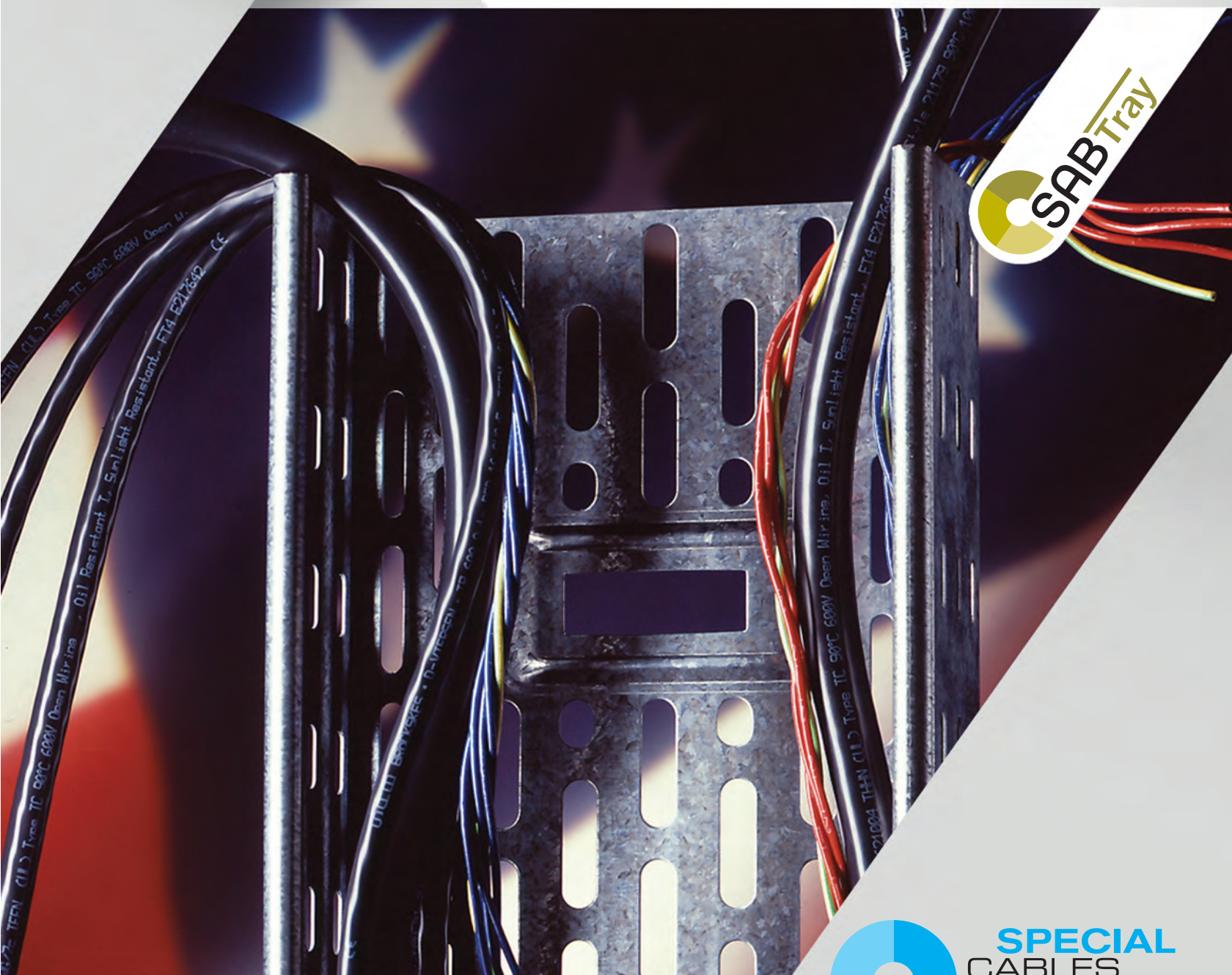
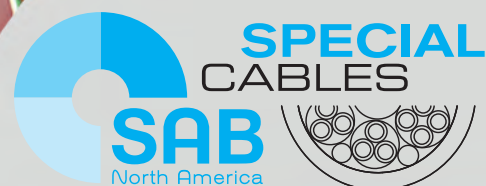


# TRAY CABLES

## FOR INDUSTRIAL APPLICATIONS



[www.sabcable.com](http://www.sabcable.com)  
866-722-2974 ■ [info@sabcable.com](mailto:info@sabcable.com)





# Tray Cables for Industrial Applications

## SAB North America



SAB North America is a focused supplier for the automation, aerospace, medical, high temperature, and robotics industries, providing cable solutions that meet, exceed, and set new standards in the flexible cable market. In addition to flexible cable products, we offer an extensive inventory of high-quality cable accessories including cord grips, grounding glands and other accessories that complement our flexible control and automation cables.

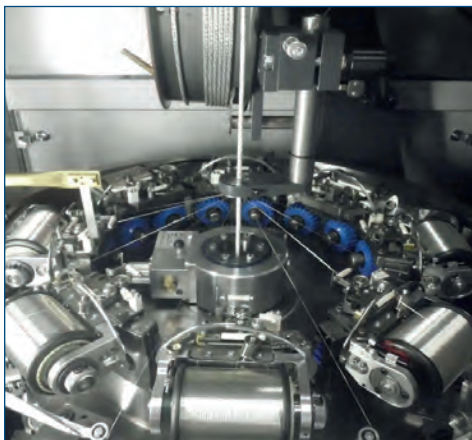
Whatever the need may be, look to SAB North America for Special Cables that can, for example, help minimize maintenance costs and increase productivity, reduce downtime, and solve specific problems. Here is a small sample of some of the challenges that Special Cables from SAB North America can help address:

- Hybrid designs for multiple functions
- Harsh environments
- Difficult applications
- Industry-specific requirements.



SAB North America offers a well-stocked line of UL and CSA-listed tray cables for use in control systems, machinery, conveyors, control panels, assembly and production lines and processing equipment. Each carries a Class 1 Division 2 explosion classification and a WTTC rating for wind turbines. The lineup features flexible versions as well as round cables that allow installers to pull more cables at a time, thereby avoiding a stiff, complicated setup.

Whether you're a valued distribution partner, an automation house, an integrator, or a contractor to the manufacturer, rest assured that our cables are reliable to maximize production efficiencies. SAB brings world class performance & 75 years of ingenuity to the table.



## SAB Service Advantage...We make it Easy

- Engineering & technical assistance
- Cut to length with no cut charges
- Prepaid freight within US for orders over \$2,500
- Specialty cable designs (1500 ft minimum)
- No minimum on orders from stock
- Free drop shipments (no surcharges)
- 24-hour shipments from stock
- Cord Grips for securing and grounding cables

# Tray Cables for Industrial Applications

## Content



			page
<b>Applications</b>			4
<b>Selection tables</b>			5
<b>Semi-Rigid Data Cables</b>			
■ DC 105		Semi-rigid PVC data cable, Type PLTC, ITC and CMG	6
■ DC 105 C		Shielded semi-rigid PVC data cable, Type PLTC, ITC and CMG	7
■ DC 105 C TP		Shielded, semi-rigid, twisted pair, PVC data cable Type PLTC, ITC, and CMG	8
<b>UV and Oil Resistant, Flexible Tray Cables</b>			
■ TR 600 S		UV and oil resistant 90°C flexible tray cable with black jacket Type TC-ER, MTW and WTTC, 90°C Wet/Dry	9
■ TR 600 S CY		Shielded UV and oil resistant 90°C flexible tray cable with black jacket Type TC-ER, MTW, WTTC, 90°C Wet/Dry	10
■ TR 600 S Gray		UV and oil resistant 90°C flexible tray cable Type TC-ER, MTW, and WTTC	11
■ TR 600 S CY Gray		Shielded UV and oil resistant 90°C flexible tray cable Type TC-ER, MTW, WTTC	12
■ TR 850 S		UV and oil resistant 90°C flexible tray and flexible cord cable Type TC-ER, STOOV	13
<b>Heavy Duty Tray Cables</b>			
■ TRAY HD TPE		Heavy duty tray cable with blue conductors Type TC-ER	14
■ TR 600 HD		Heavy duty tray cable Type TC-ER	15
■ TR 600 C HD		Shielded heavy duty tray cable Type TC-ER	16
<b>Heavy Duty Continuous Flex Tray Cables</b>			
■ TR 600 Auto HD		Continuous flex heavy duty tray cable Type TC-ER	17
■ TR 600 Auto C HD		Shielded continuous flex heavy duty tray cable Type TC-ER	18
<b>Additional Information</b>			
■ Manufacturing Capabilities			19
■ Secure & Ground Your Cable with Cord Grips			19

# Tray Cables for Industrial Applications

## Applications



### Application of flexible power and control tray cable, Type TC, MTW and WTTC

These special multi-conductor cables shall be permitted for use in power, lighting, control and signal circuits in accordance with the National Electrical Code (NEC), NFPA 70 Article 336. They are also approved for use in cable trays, in raceways and in outdoor locations supported by a messenger wire in accordance with Underwriters Laboratories Inc. (UL) Standard of Safety UL 1277 and for class I division 2 circuits as permitted in NEC article 501.10 (B) and for class II division 2 circuits as permitted in NEC article 502.10 (B) and in industrial establishments where the conditions of maintenance and supervision ensure that only qualified persons service the installation, and where the cables are continuously supported and protected against physical damage using mechanical protection, such as struts, angles or channels. These tray cables comply with the crush and impact requirements of Type TC and are identified for such use with the ER marking on the jacket.

Tray cables are for use as exposed runs between a cable tray and the utilization device where the cables are continuously supported and protected against physical damage and are secured at intervals not exceeding 1.8 m (6 feet). Grounding for the utilization equipment shall be provided by an equipment grounding conductor within the cables. These tray cables shall also be permitted to be used in wet locations and are resistant to moisture and corrosive agents. Cables that are surface marked "oil resistant I" have a jacket that is for exposure to mineral oil at temperature not in excess of 60°C (140°F). Marked with "oil resistant II" they have a jacket that is for exposure to mineral oil at temperatures not in excess of 75°C (167°C). The cables are flame retardant and self-extinguishing and sunlight resistant depending on the jacket color. The cables listed as UR AWM or UL MTW can be applied in the NFPA 79 machinery area. These cables are specified for use acc. to National Electrical Code (NFPA 70) and acc. to the National Fire Protection Association Electrical Standard for industrial machinery (NFPA 79). Wind turbine power and control cables are intended to be installed in cable trays or raceways within a wind turbine generator.

#### Exemplary applications:

DC 105                      Type PLTC, ITC, & CMG  
 DC 105 C                Type PLTC, ITC, & CMG  
 DC 105 C TP            Type PLTC, ITC, & CMG

Recommended for use with computers, data transmission, office equipment, process control equipment and instrumentation, and all other signal and data communications

#### Exemplary applications:

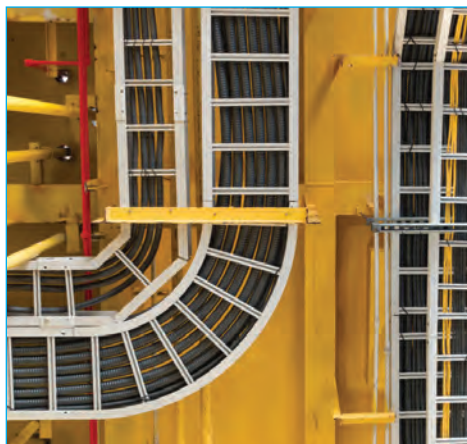
TR 600 S                    Type TC-ER, MTW & WTTC  
 TR 600 S CY            Type TC-ER, MTW & WTTC  
 TR 850 S                    Type TC-ER & ST00W

Recommended applications are machine tools, control systems assembly lines, CNC machining, grinding machines, bottling equipment, data processing equipment and connections between control panels and machines

#### Exemplary applications:

TRAY HD TPE            Type TC-ER  
 TR 600 HD                Type TC-ER  
 TR 600 C HD            Type TC-ER  
 TR 600 Auto HD        Type TC-ER  
 TR 600 Auto C HD     Type TC-ER

In hazardous (classified) areas Class I, Division 2 per NEC Article 501.4 (B), UL Type TC is in accordance with UL standard 1277 and NEC Article 336





# Tray Cables for Industrial Applications

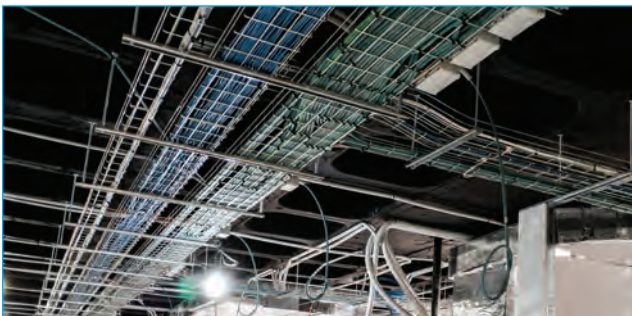
## Selection Chart



		Cable Type																	
		6	7	8	9	10	11	12	13	14	15	16	17	18					
		DC 105	DC 105 C	DC 105 C TP	TR 600 S	TR 600 S Gray	TR 600 S CY	TR 600 S CY Gray	TR 850 S	TRAY HD TPE	TR 600 HD	TR 600 C HD	TR 600 Auto HD	TR 600 Auto C HD					
Conductors	Numbered conductors																		
	Color code chart 2, 4, and 6	●	●																
	Color code chart 3			●															
	Colored								●										
Insulation	Semi-rigid PVC (26-20 AWG)	●	●	●															
	PVC								●										
	PVC/Nylon	●	●	●	●	●	●	●		●	●	●	●	●					
Shielding	Tinned Copper Braid						●	●				●	●						
	Foil & Tinned Copper Braid		●	●															
	Inner jacket											●							
Jacket	Gray jacket	PVC	PVC	PVC		PVC		PVC		TPE									
	Black jacket				PVC		PVC		TPE					TPE	TPE		TPE		
	Orange jacket																		
Temperature range static*	+105°C	●	●	●	●	●	●	●	●	●	●	●	●	●	●	●	●		
	+90°C	●	●	●	●	●	●	●	●	●	●	●	●	●	●	●	●		
	-25°C	●	●	●	●	●	●	●	●	●	●	●	●	●	●	●	●		
	-40°C	●	●	●	●	●	●	●	●	●	●	●	●	●	●	●	●		
Voltage	300 V	●	●	●															
	600 V				●	●	●	●	●	●	●	●	●	●					
	1000 V CSA AWM				●	●	●	●	●	●	●	●	●	●					
	1000 V (UL) WTTC				●	●	●	●	●	●	●	●	●	●					
	Test voltage: 2000 V	●	●	●	●	●	●	●	●	●	●	●	●	●	●	●	●		
Characteristics	Burning characteristics: (UL) / CSA FT4				●	●	●	●	●	●	●	●	●	●	●	●	●		
	Cold bend test -25°C	●	●	●															
	Cold bend test -40°C				●	●	●	●	●	●	●	●	●	●	●	●	●		
	Oil resistance																		
	Oil resistance I																		
	Oil resistance I & II				●	●	●	●	●	●	●	●	●	●	●	●	●		
	Sunlight resistance				●	●	●	●	●	●	●	●	●	●	●	●	●		
	Exposed runs	● <sup>1</sup>	● <sup>1</sup>	● <sup>1</sup>	●	●	●	●	●	●	●	●	●	●	●	●	●		
	Direct burial				●	●	●	●	●	●	●	●	●	●	●	●	●		
	Machinery area	●	●	●	●	●	●	●	●	●	●	●	●	●	●	●	●		
	Continuous Flex													●	●				

from <sup>1</sup> 18-16 AWG only  
 to

\*The temperature range for flexible application is mentioned on the corresponding catalog page



# Tray Cables for Industrial Applications

## DC 105

Semi-rigid PVC data cable  
Type PLTC, ITC, and CMG



(DC 105) - CSA TYPE CMG or AWM I/II A/B 105°C 300V FT4



Marking for DC 105 DC3332203:

SAB North America P/N DC3332203 22AWG/3c (UL) TYPE PLTC or ITC or CMG 105°C (DC 105) - CSA TYPE CMG or AWM I/II A/B 105°C 300V FT4 RoHS CE

### Construction:

<b>Conductor:</b>	tinned copper strands
<b>Insulation:</b>	
26 - 20 AWG:	semi-rigid PVC
18 - 16 AWG:	PVC/nylon
<b>Color code:</b>	
26 - 24 AWG:	color code, chart 2
22 AWG:	color code, chart 4
20 - 16 AWG:	color code chart 6
<b>Stranding:</b>	twisted together in layers with non-wicking fillers
<b>Jacket material:</b>	PVC
<b>Jacket color:</b>	grayish tan (RAL 7032)

### Technical data:

<b>Nominal voltage:</b>	300 V
<b>Testing voltage:</b>	2000 V
<b>Min. bending radius:</b>	
fixed installation:	4 x O.D.
<b>Temperature range:</b>	-25/+105°C
<b>Approvals:</b>	
<b>UL:</b>	CMG (26-16 AWG) PLTC & ITC (22 - 20 AWG) PLTC-ER & ITC-ER (18 -16 AWG)
<b>CSA:</b>	CMG/FT4 AWM I/II A/B CE, RoHS
<b>Absence of harmful substances:</b>	acc. to RoHS directive of the European Union see page O/30

#### Color Code Chart 2:

no.	Conductor color	no.	Conductor color
1	black	14	green/white
2	white	15	blue/white
3	red	16	black/red
4	green	17	white/red
5	orange	18	orange/red
6	blue	19	blue/red
7	white/black	20	red/green
8	red/black	21	orange/green
9	green/black	22	black/white/red
10	orange/black	23	white/black/red
11	blue/black	24	red/black/white
12	black/white	25	green/black/white
13	red/white		

#### Color Code Chart 4:

no.	Conductor color	no.	Conductor color
1	black	14	white/orange
2	brown	15	white/yellow
3	red	16	white/green
4	orange	17	white/blue
5	yellow	18	white/violet
6	green	19	white/gray
7	blue	20	white/black/brown
8	violet	21	white/black/red
9	gray	22	white/black/orange
10	white	23	white/black/yellow
11	white/black	24	white/black/green
12	white/brown	25	white/black/blue
13	white/red		

#### Color Code Chart 6:

no.	Conductor color	no.	Conductor color
1	black	14	red/yellow
2	red	15	red/black
3	white	16	white/black
4	green	17	white/red
5	orange	18	white/green
6	blue	19	white/yellow
7	brown	20	white/blue
8	yellow	21	white/brown
9	violet	22	white/orange
10	gray	23	white/gray
11	pink	24	white/violet
12	tan	25	white/black/red
13	red/green		

item no.	no. of conductors	outer-ø inch	outer-ø mm	cable weight ≈lbs/mft
<b>▶ 26 AWG (7/34)</b>				
DC3222603	3	0.156	4.0	18
DC3222604	4	0.166	4.2	20
DC3222606	6	0.189	4.8	25
DC3222607	7	0.192	4.9	26
DC3222608	8	0.204	5.2	28
DC3222610	10	0.230	5.8	36
DC3222614	14	0.262	6.7	40
DC3222615	15	0.261	6.6	48
DC3222620	20	0.295	7.5	58
DC3222625	25	0.323	8.2	70
<b>▶ 24 AWG (7/32)</b>				
DC3222402	2	0.160	4.1	20
DC3222403	3	0.167	4.2	23
DC3222404	4	0.182	4.6	24
DC3222405	5	0.191	4.9	27
DC3222406	6	0.204	5.2	30
DC3222407	7	0.207	5.3	31
DC3222408	8	0.220	5.6	35
DC3222410	10	0.249	6.3	43
DC3222412	12	0.256	6.5	49
DC3222415	15	0.283	7.2	59
DC3222418	18	0.303	7.7	65
DC3222420	20	0.311	7.9	70
DC3222425	25	0.343	8.7	86
<b>▶ 22 AWG (7/30)</b>				
DC3332202	2	0.178	4.5	22
DC3332203	3	0.190	4.8	25
DC3332204	4	0.202	5.1	29
DC3332205	5	0.213	5.4	34
DC3332206	6	0.228	5.8	40
DC3332207	7	0.231	5.9	41
DC3332208	8	0.244	6.2	46
DC3332209	9	0.261	6.6	53
DC3332210	10	0.289	7.3	60
DC3332212	12	0.297	7.5	67
DC3332215	15	0.317	8.1	79
DC3332218	18	0.339	8.6	87
DC3332220	20	0.348	8.8	94
DC3332225	25	0.385	9.8	117
DC3332230	30	0.430	10.9	143
DC3332240	40	0.475	12.1	184
DC3332250	50	0.517	13.1	221

item no.	no. of conductors	outer-ø inch	outer-ø mm	cable weight ≈lbs/mft
<b>▶ 20 AWG (≈ 19/32)</b>				
DC3332002	2	0.196	5.0	29
DC3332003	3	0.205	5.2	35
DC3332004	4	0.220	5.6	42
DC3332006	6	0.254	6.5	55
DC3332007	7	0.254	6.5	52
DC3332008	8	0.275	7.0	62
DC3332009	9	0.303	7.7	74
DC3332010	10	0.325	8.3	80
DC3332012	12	0.335	8.5	92
DC3332015	15	0.358	9.1	110
DC3332020	20	0.415	10.5	143
DC3332025	25	0.459	11.7	184
<b>▶ 18 AWG (19/30)</b>				
DC3331802	2	0.276	7.0	45
DC3331803	3	0.29	7.4	58
DC3331804	4	0.313	8.0	70
DC3331805	5	0.339	8.6	78
DC3331806	6	0.366	9.3	91
DC3331807	7	0.367	9.3	98
DC3331808	8	0.395	10.0	110
DC3331809	9	0.423	10.7	124
DC3331810	10	0.457	11.6	144
DC3331812	12	0.472	12.0	164
DC3331815	15	0.507	12.9	194
DC3331818	18	0.579	14.7	244
DC3331820	20	0.595	15.1	263
DC3331825	25	0.662	16.8	325
DC3331850	50	0.904	23.0	621
<b>▶ 16 AWG (26/30)</b>				
DC3331602	2	0.296	7.5	54
DC3331603	3	0.312	7.9	68
DC3331604	4	0.337	8.6	83
DC3331605	5	0.366	9.3	95
DC3331606	6	0.396	10.1	109
DC3331607	7	0.397	10.1	119
DC3331608	8	0.428	10.9	134
DC3331609	9	0.459	11.7	160
DC3331610	10	0.497	12.6	174
DC3331612	12	0.513	13.0	199
DC3331615	15	0.584	14.8	261
DC3331618	18	0.629	16.0	297
DC3331620	20	0.647	16.4	330
DC3331625	25	0.721	18.3	400

Other dimensions and colors are available on request

# Tray Cables for Industrial Applications

## DC 105 C

Shielded semi-rigid PVC data cable  
Type PLTC, ITC, and CMG



CMG OR AWM I/II A/B 105°C 300V FT4 RoHS CE



Marking for DC 105 C DC3332204S:

SAB North America P/N DC3332204S 22AWG/4c (UL) TYPE PLTC OR ITC OR CMG SHIELDED 105°C (DC 105 C) CSA TYPE CMG OR AWM I/II A/B 105°C 300V FT4 RoHS CE

### Construction:

<b>Conductor:</b>	tinned copper strands
<b>Insulation:</b>	
26 - 20 AWG:	semi-rigid PVC
18 - 16 AWG:	PVC/nylon
<b>Color code:</b>	
26 - 24 AWG:	color code, chart 2
22 AWG:	color code, chart 4
20 - 16 AWG:	color code chart 6
<b>Stranding:</b>	twisted together in layers with non-wicking fillers
<b>Shielding:</b>	double shielding, alu-foil, tinned copper braiding and tinned drain wire
<b>Jacket material:</b>	PVC
<b>Jacket color:</b>	grayish tan (RAL 7032)

### Technical data:

<b>Nominal voltage:</b>	300 V
<b>Testing voltage:</b>	2000 V
<b>Min. bending radius:</b>	
fixed installation:	6 x O.D.
<b>Temperature range:</b>	-25/+105°C
<b>Approvals:</b>	
	<b>UL:</b> CMG (26 - 16 AWG) PLTC & ITC (22 - 20 AWG) PLTC-ER & ITC-ER (18 - 16 AWG)
	<b>CSA:</b> CMG/FT4 AWM I/II A/B CE, RoHS
<b>Absence of harmful substances:</b>	acc. to RoHS directive of the European Union see page O/30

#### Color Code Chart 2:

no.	Conductor color	no.	Conductor color
1	black	14	green/white
2	white	15	blue/white
3	red	16	black/red
4	green	17	white/red
5	orange	18	orange/red
6	blue	19	blue/red
7	white/black	20	red/green
8	red/black	21	orange/green
9	green/black	22	black/white/red
10	orange/black	23	white/black/red
11	blue/black	24	red/black/white
12	black/white	25	green/black/white
13	red/white		

#### Color Code Chart 4:

no.	Conductor color	no.	Conductor color
1	black	14	white/orange
2	brown	15	white/yellow
3	red	16	white/green
4	orange	17	white/blue
5	yellow	18	white/violet
6	green	19	white/gray
7	blue	20	white/black/brown
8	violet	21	white/black/red
9	gray	22	white/black/orange
10	white	23	white/black/yellow
11	white/black	24	white/black/green
12	white/brown	25	white/black/blue
13	white/red		

#### Color Code Chart 6:

no.	Conductor color	no.	Conductor color
1	black	14	red/yellow
2	red	15	red/black
3	white	16	white/black
4	green	17	white/red
5	orange	18	white/green
6	blue	19	white/yellow
7	brown	20	white/blue
8	yellow	21	white/brown
9	violet	22	white/orange
10	gray	23	white/gray
11	pink	24	white/violet
12	tan	25	white/black/red
13	red/green		

item no.	no. of conductors	outer-ø inch	outer-ø mm	cable weight ≈lbs/mft
----------	-------------------	--------------	------------	-----------------------

#### ▶ 26 AWG (7/34)

DC3222602S	2	0.180	4.6	27
DC3222603S	3	0.186	4.7	30
DC3222604S	4	0.196	5.0	32
DC3222605S	5	0.207	5.3	34
DC3222606S	6	0.219	5.6	37
DC3222607S	7	0.221	5.6	39
DC3222608S	8	0.231	5.9	43
DC3222610S	10	0.258	6.6	51
DC3222615S	15	0.289	7.3	66
DC3222618S	18	0.307	7.8	70
DC3222625S	25	0.343	8.7	88

#### ▶ 24 AWG (7/32)

DC3222403S	3	0.197	5.0	35
DC3222404S	4	0.209	5.3	36
DC3222405S	5	0.221	5.6	39
DC3222406S	6	0.234	5.9	45
DC3222407S	7	0.236	6.0	46
DC3222408S	8	0.248	6.3	51
DC3222409S	9	0.261	6.6	56
DC3222410S	10	0.288	7.3	62
DC3222412S	12	0.288	7.3	67
DC3222415S	15	0.312	7.9	80
DC3222418S	18	0.332	8.4	86
DC3222420S	20	0.340	8.6	92
DC3222425S	25	0.372	9.4	111

item no.	no. of conductors	outer-ø inch	outer-ø mm	cable weight ≈lbs/mft
----------	-------------------	--------------	------------	-----------------------

#### ▶ 22 AWG (7/30)

DC3332203S	3	0.210	5.3	40
DC3332204S	4	0.224	5.7	43
DC3332205S	5	0.237	6.0	49
DC3332206S	6	0.252	6.4	54
DC3332207S	7	0.260	6.6	57
DC3332208S	8	0.267	6.8	61
DC3332210S	10	0.312	7.9	77
DC3332212S	12	0.320	8.1	86
DC3332215S	15	0.339	8.6	99
DC3332218S	18	0.362	9.2	110
DC3332220S	20	0.371	9.4	118
DC3332225S	25	0.433	11	150

#### ▶ 20 AWG (≈ 19/32)

DC3332002S	2	0.220	5.6	42
DC3332003S	3	0.229	5.8	51
DC3332004S	4	0.244	6.2	59
DC3332006S	6	0.289	7.3	73
DC3332008S	8	0.307	7.8	85
DC3332010S	10	0.348	8.8	102
DC3332015S	15	0.380	9.7	135
DC3332020S	20	0.437	11.1	169
DC3332025S	25	0.481	12.2	213

#### ▶ 18 AWG (19/30)

DC3331803S	3	0.314	8.0	79
DC3331804S	4	0.337	8.6	92
DC3331806S	6	0.390	9.9	116

#### ▶ 16 AWG (26/30)

DC3331603S	3	0.336	8.5	93
DC3331604S	4	0.361	9.2	111
DC3331606S	6	0.420	10.7	139

Other dimensions and colors are available on request

# Tray Cables for Industrial Applications

## DC 105 C TP

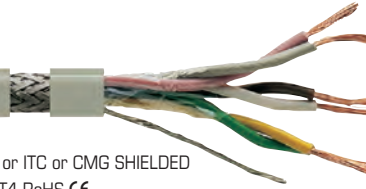
Shielded, semi-rigid, twisted pair, PVC data cable  
Type PLTC, ITC, and CMG



AWM I/II A/B 105°C 300V FT4 RoHS CE

Marking for DC 105 C TP DC3332203TP:

SAB North America P/N DC3332203TP 22AWG/3pr (UL) TYPE PLTC or ITC or CMG SHIELDED 105°C (DC 105 CTP) CSA TYPE CMG or AWM I/II A/B 105°C 300V FT4 RoHS CE



### Construction:

<b>Conductor:</b>	tinned copper strands
<b>Insulation:</b>	
24 - 20 AWG:	semi-rigid PVC
18 - 16 AWG:	PVC/nylon
<b>Color code:</b>	color code, chart 3
<b>Stranding:</b>	paired and twisted together in layers with non-wicking fillers
<b>Shielding:</b>	double shielding, alu-foil tinned copper braiding and tinned drain wire
<b>Jacket material:</b>	PVC
<b>Jacket color:</b>	grayish tan (RAL 7032)

### Technical data:

<b>Nominal voltage:</b>	300 V
<b>Testing voltage:</b>	2000 V
<b>Min. bending radius:</b>	
fixed installation:	6 x O.D.
<b>Temperature range:</b>	-25/+105°C
<b>Approvals:</b>	<b>UL:</b> CMG (24 - 16 AWG) PLTC & ITC (22 - 20 AWG) PLTC-ER & ITC-ER (18 - 16 AWG) <b>CSA:</b> CMG/FT4 AWM I/II A/B CE, RoHS
<b>Absence of harmful substances:</b>	acc. to RoHS directive of the European Union see page O/30

### Color Code Chart 3:

Pair no.	color combination
1	black paired with red
2	black paired with white
3	black paired with green
4	black paired with blue
5	black paired with yellow
6	black paired with brown
7	black paired with orange
8	red paired with white
9	red paired with green
10	red paired with blue
11	red paired with yellow
12	red paired with brown
13	red paired with orange
14	green paired with white
15	green paired with blue
16	green paired with yellow
17	green paired with brown
18	green paired with orange
19	white paired with blue
20	white paired with yellow
21	white paired with brown
22	white paired with orange
23	blue paired with yellow
24	blue paired with brown
25	blue paired with orange

item no.	no. of pairs	outer-ø inch	outer-ø mm	cable weight ≈lbs/mft
<b>▶ 24 AWG (7/32)</b>				
DC3222401TP*	1	0.190	4.8	31
DC3222402TP	2	0.246	6.2	44
DC3222403TP	3	0.258	6.6	51
DC3222404TP	4	0.292	7.4	57
DC3222405TP	5	0.307	7.8	65
DC3222406TP	6	0.328	8.3	73
DC3222408TP	8	0.351	8.9	85
DC3222409TP	9	0.373	9.5	97
DC3222415TP	15	0.460	11.7	151
<b>▶ 22 AWG (7/30)</b>				
DC3332201TP*	1	0.203	5.2	32
DC3332202TP	2	0.266	6.8	50
DC3332203TP	3	0.289	7.3	63
DC3332204TP	4	0.323	8.2	71
DC3332205TP	5	0.333	8.5	80
DC3332206TP	6	0.358	9.1	90
DC3332208TP	8	0.383	9.7	107
DC3332209TP	9	0.429	10.9	128
DC3332211TP	11	0.460	11.7	154
DC3332215TP	15	0.505	12.8	188
DC3332225TP	25	0.644	16.4	262

item no.	no. of pairs	outer-ø inch	outer-ø mm	cable weight ≈lbs/mft
<b>▶ 20 AWG (≈ 19/32)</b>				
DC3332001TP	1	0.220	5.6	42
DC3332002TP	2	0.305	7.7	67
DC3332003TP	3	0.321	8.2	80
DC3332004TP	4	0.345	8.8	95
DC3332006TP	6	0.422	10.7	129
DC3332009TP	9	0.482	12.2	180
DC3332015TP	15	0.572	14.5	254
<b>▶ 18 AWG (19/30)</b>				
DC3331801TP	1	0.300	7.6	68
DC3331802TP	2	0.415	10.5	106
DC3331803TP	3	0.439	11.2	128
DC3331804TP	4	0.476	12.1	162
DC3331806TP	6	0.595	15.1	231
DC3331809TP	9	0.686	17.4	312
DC3331815TP	15	0.823	20.9	461
<b>▶ 16 AWG (26/30)</b>				
DC3331601TP	1	0.320	8.1	78
DC3331602TP	2	0.448	11.4	124
DC3331603TP	3	0.474	12.0	162
DC3331604TP	4	0.515	13.1	192

\*DC3222401TP & DC3332201TP: black paired with white color code

Other dimensions and colors are available on request





# Tray Cables for Industrial Applications

## TR 600 S

UV and oil resistant 90°C flexible tray cable  
Type TC-ER, MTW, WTTCC, and CSA approved



Marking for TR 600 S 93331641:

SAB NORTH AMERICA TR 600 S 93331641 16 AWG/41C (UL) TC-ER 90C DRY/WET 600V SUN RES DIR BUR OIL RES I/II OR WTTCC 1000V OR MTW "FLEXING" OR DP-1 OR AWM 2586 105°C CSA CIC-TC PVC/N 90°C DRY 75°C WET 600V -25°C SR FT4 OR AWM I/II A/B 90C 1000V FT4 RoHS CE

### Construction:

<b>Conductor:</b>	bare copper strands class K (30 AWG multiple strands)
<b>Insulation:</b>	special formulated PVC/Nylon
<b>Color code:</b>	black conductors with consecutive white numbers; green/yellow ground from 3 conductors
<b>Stranding:</b>	in layers
<b>Jacket material:</b>	special oil resistant pressure extruded PVC
<b>Jacket color:</b>	black (RAL 9005)

### Outstanding features:

- flexible stranding for easy installation
- oil resistant meeting UL Oil Res I and II
- NFPA 79 for Industrial Machinery
- UL TC-ER (exposed runs)
- CSA approved for TC
- Submersible pump (14 AWG ≥ 3 thru 7 cond.)
- WTTCC: Wind Turbine tray cable
- 90°C Wet rated
- Class 1 Div 2 per NEC Article 501.4 (B)

### Technical data:

<b>Voltage:</b>	<b>UL-AWM / (UL) / CSA:</b> 600 V <b>(UL) WTTCC:</b> 1000 V
<b>Testing voltage:</b>	2500 V
<b>Min. bending radius:</b>	<i>fixed installation:</i> 4 x O.D. <i>free movement:</i> 6 x O.D.
<b>Temperature range:</b>	<b>UL-AWM</b> up to +105°C <b>(UL) / CSA:</b> up to +90°C -40°C
<b>Burning characteristics:</b>	(UL) / CSA FT4
<b>Oil resistance I &amp; II:</b>	yes
<b>Sunlight resistance:</b>	yes
<b>Exposed runs:</b>	yes
<b>Cold bend test:</b>	-40°C
<b>Direct burial:</b>	yes
<b>Machinery area:</b>	yes
<b>Approvals:</b>	UL TC-ER, UL MTW, UL AWM, UL WTTCC, CSA CIC-TC, CSA AWM, CE, RoHS
<b>Absence of harmful substances:</b>	acc. to RoHS directive of the European Union see page O/30

item no.	no. of conductors incl. ground	outer-ø inch	outer-ø mm	cable weight ≈lbs/mft
<b>▶ 18 AWG</b>				
93331802*	2	0.286	7.3	45
93331803	3	0.300	7.6	55
93331804	4	0.324	8.2	67
93331805	5	0.349	8.9	79
93331807	7	0.376	9.6	100
93331809	9	0.432	11.0	125
93331812	12	0.480	12.2	157
93331818	18	0.596	15.1	244
93331825	25	0.686	17.4	319
93331850	50	0.940	23.9	622
<b>▶ 16 AWG</b>				
93331602*	2	0.306	7.8	52
93331603	3	0.321	8.2	70
93331604	4	0.348	8.8	81
93331605	5	0.376	9.6	96
93331607	7	0.412	10.5	126
93331608	8	0.440	11.2	137
93331609	9	0.473	12.0	152
93331612	12	0.527	13.4	196
93331616	16	0.613	15.6	273
93331618	18	0.646	16.4	300
93331619	19	0.646	16.4	310
93331625	25	0.746	18.9	395
93331634	34	0.884	22.5	544
93331637	37	0.896	22.8	592
93331641	41	0.945	24.0	654
93331650	50	1.025	26.0	756

UL TC-ER-JP (joist pull) available upon request

item no.	no. of conductors incl. ground	outer-ø inch	outer-ø mm	cable weight ≈lbs/mft
<b>▶ 14 AWG</b>				
93331402*	2	0.346	8.8	65
93331403	3	0.364	9.2	88
93331404	4	0.396	10.1	112
93331405	5	0.430	10.9	130
93331407	7	0.472	12.0	169
93331409	9	0.578	14.7	236
93331412	12	0.644	16.4	297
93331418	18	0.744	18.9	417
93331425	25	0.904	23.0	596
<b>▶ 12 AWG</b>				
93331202*	2	0.385	9.8	99
93331203	3	0.403	10.2	120
93331204	4	0.440	11.2	150
93331205	5	0.479	12.2	189
93331207	7	0.526	13.4	240
<b>▶ 10 AWG</b>				
93331003	3	0.487	12.4	179
93331004	4	0.568	14.4	248
93331005	5	0.618	15.7	298
93331007	7	0.674	17.1	403
<b>▶ 8 AWG</b>				
93330803	3	0.662	16.8	309
93330804	4	0.728	18.5	388
93330805	5	0.826	21.0	465
<b>▶ 6 AWG</b>				
93330603	3	0.765	19.4	443
93330604	4	0.879	22.3	580
93330605	5	0.954	24.2	717

item no.	no. of conductors incl. ground	outer-ø inch	outer-ø mm	cable weight ≈lbs/mft
<b>▶ 4 AWG</b>				
93330403	3	0.966	24.5	696
93330404	4	1.061	26.9	845
93330405	5	1.179	29.9	1035
<b>▶ 2 AWG</b>				
93330203	3	1.114	28.3	977
93330204	4	1.160	29.5	1215
93330205	5	1.363	34.6	1575
<b>▶ 1 AWG</b>				
93330104	4	1.401	35.6	1588
<b>▶ 1/0 AWG</b>				
93331104	4	1.458	37.0	1971
<b>▶ 2/0 AWG</b>				
93332104	4	1.588	40.3	2301
<b>▶ 3/0 AWG</b>				
93333104	4	1.733	44.0	2946
<b>▶ 4/0 AWG</b>				
93334104	4	1.841	46.8	3459
<b>▶ 250 MCM</b>				
93332504	4	2.138	54.3	4538
<b>▶ 350 MCM</b>				
93333504	4	2.335	59.3	5591
<b>▶ 500 MCM</b>				
93335004	4	2.815	71.5	8065

\*2 conductor cable does not have ground  
\*2 conductor cables are rated UL TC only  
Other dimensions and colors are available on request

# Tray Cables for Industrial Applications

## TR 600 S CY

UV and oil resistant 90°C shielded flexible tray cable  
Type TC-ER, MTW, WTTC, and CSA approved



SR FT4 OR AWM I/II A/B 90C 1000V FT4 RoHS CE



Marking for TR 600 S CY 93341604:

SAB NORTH AMERICA TR 600 S CY 93341604 16 AWG/ 4C (UL) TC-ER 90C DRY/WET 600V SUN RES DIR BUR OIL RES I/II OR WTTC 1000V OR MTW "FLEXING" OR DP-1 OR AWM 2586 105°C CSA CIC-TC PVC/N 90°C DRY 75°C WET 600V -25°C SR FT4 OR AWM I/II A/B 90C 1000V FT4 RoHS CE

### Construction:

<b>Conductor:</b>	bare copper strands class K (30 AWG multiple strands)
<b>Insulation:</b>	special formulated PVC/Nylon
<b>Color code:</b>	black conductors with consecutive white numbers; green/yellow ground from 3 conductors
<b>Stranding:</b>	in layers
<b>Wrapping:</b>	fleece tape
<b>Shielding:</b>	tinned copper braiding (85% coverage)
<b>Jacket material:</b>	special oil resistant pressure extruded PVC
<b>Jacket color:</b>	black (RAL 9005)

### Outstanding features:



- flexible stranding for easy installation
- oil resistant meeting UL Oil Res I and II
- NFPA 79 for Industrial Machinery
- UL TC-ER (exposed run)
- CSA approved for TC
- Submersible pump (14 AWG ≥ 3 thru 7 cond.)
- WTTC: Wind Turbine tray cable
- 90°C Wet rated
- Class 1 Div 2 per NEC Article 501.4 (B)

### Technical data:

<b>Voltage:</b>	<b>UL-AWM / (UL) / CSA:</b> 600 V <b>(UL) WTTC:</b> 1000 V
<b>Testing voltage:</b>	2500 V
<b>Min. bending radius:</b>	<i>fixed installation:</i> 6 x O.D. <i>free movement:</i> 8 x O.D.
<b>Temperature range:</b>	<b>UL-AWM</b> up to +105°C <b>(UL) / CSA:</b> up to +90°C -40°C
<b>Burning characteristics:</b>	(UL) / CSA FT4
<b>Oil resistance I &amp; II:</b>	yes
<b>Sunlight resistance:</b>	yes
<b>Exposed runs:</b>	yes
<b>Cold bend test:</b>	-40°C
<b>Direct burial:</b>	yes
<b>Machinery area:</b>	yes
<b>Approvals:</b>	UL TC-ER, UL MTW, UL AWM, UL WTTC, CSA CIC-TC, CSA AWM, CE, RoHS
<b>Absence of harmful substances:</b>	acc. to RoHS directive of the European Union see page O/30

item no.	no. of conductors incl. ground	outer-ø inch	outer-ø mm	cable weight ≈lbs/mft
<b>▶ 18 AWG</b>				
93341803	3	0.324	8.2	71
93341804	4	0.348	8.8	85
93341805	5	0.373	9.5	95
93341807	7	0.400	10.2	120
93341809	9	0.455	11.6	149
93341812	12	0.504	12.8	185
93341818	18	0.617	15.7	270
93341825	25	0.710	18.0	365
<b>▶ 16 AWG</b>				
93341603	3	0.345	8.8	83
93341604	4	0.372	9.4	100
93341605	5	0.400	10.2	116
93341607	7	0.430	10.9	145
93341609	9	0.492	12.5	187
93341612	12	0.579	14.7	245
93341618	18	0.664	16.9	335
93341625	25	0.770	19.6	445

item no.	no. of conductors incl. ground	outer-ø inch	outer-ø mm	cable weight ≈lbs/mft
<b>▶ 14 AWG</b>				
93341403	3	0.388	9.9	108
93341404	4	0.420	10.7	131
93341405	5	0.454	11.5	155
93341407	7	0.490	12.4	190
93341412	12	0.662	16.8	350
93341418	18	0.764	19.4	482
93341425	25	0.924	23.5	701
<b>▶ 12 AWG</b>				
93341203	3	0.427	10.8	145
93341204	4	0.464	11.8	178
93341205	5	0.506	12.9	210
<b>▶ 10 AWG</b>				
93341003	3	0.512	13.0	190
93341004	4	0.568	14.4	250
93341005	5	0.643	16.3	350
93341007	7	0.695	17.7	408

item no.	no. of conductors incl. ground	outer-ø inch	outer-ø mm	cable weight ≈lbs/mft
<b>▶ 8 AWG</b>				
93340804	4	0.759	19.3	447
93340805	5	0.827	21.0	532
<b>▶ 6 AWG</b>				
93340604	4	0.915	23.2	672
93340605	5	0.936	23.8	766
<b>▶ 4 AWG</b>				
93340404	4	1.097	27.9	993
<b>▶ 2 AWG</b>				
93340204	4	1.271	32.3	1455
2 conductor cable does not have ground				
Other dimensions and colors are available on request				

UL TC-ER-JP (joist pull) available upon request

# Tray Cables for Industrial Applications

## TR 600 S gray

UV and oil resistant 90°C flexible tray cable  
Type TC-ER, MTW, WTTC, and CSA approved



Marking for TR 600 S 93351641:

SAB NORTH AMERICA TR 600 S 93351641 16 AWG/41C (UL) TC-ER 90C DRY 75C WET 600V SUN RES DIR BUR OIL RES I/II OR WTTC 1000V OR MTW "FLEXING" OR DP-1 OR AWM 2586 CSA CIC-TC PVC/N 90°C DRY 75°C WET 600V -25°C SR FT4 OR AWM I/II A/B 90C 1000V FT4 RoHS CE

### Construction:

<b>Conductor:</b>	bare copper strands class K (30 AWG multiple strands)
<b>Insulation:</b>	special formulated PVC/Nylon
<b>Color code:</b>	black conductors with consecutive white numbers; green/yellow ground from 3 conductors
<b>Stranding:</b>	in layers
<b>Jacket material:</b>	special oil resistant pressure extruded PVC
<b>Jacket color:</b>	gray (RAL 7000)

### Outstanding features:

- flexible stranding for easy installation
- oil resistant meeting UL Oil Res I and II
- NFPA 79 for Industrial Machinery
- UL TC-ER (exposed run)
- CSA approved for TC
- Submersible pump (14 AWG ≥ 3 thru 7 cond.)
- WTTC: Wind Turbine tray cable
- Class 1 Div 2 per NEC Article 501.4 (B)

### Technical data:

<b>Voltage:</b>	<b>UL-AWM / (UL) / CSA:</b> 600 V <b>(UL) WTTC:</b> 1000 V
<b>Testing voltage:</b>	2500 V
<b>Min. bending radius:</b>	<i>fixed installation:</i> 4 x O.D. <i>free movement:</i> 6 x O.D.
<b>Temperature range:</b>	<b>UL-AWM</b> up to +105°C <b>(UL) / CSA:</b> up to +90°C -40°C
<b>Burning characteristics:</b>	(UL) / CSA FT4
<b>Oil resistance I &amp; II:</b>	yes
<b>Sunlight resistance:</b>	yes
<b>Exposed runs:</b>	yes
<b>Cold bend test:</b>	-40°C
<b>Direct burial:</b>	yes
<b>Machinery area:</b>	yes
<b>Approvals:</b>	UL TC-ER, UL MTW, UL AWM, UL WTTC, CSA CIC-TC, CSA CIC, CSA AWM, CE, RoHS
<b>Absence of harmful substances:</b>	acc. to RoHS directive of the European Union see page O/30

item no.	no. of conductors incl. ground	outer-ø inch	outer-ø mm	cable weight ≈lbs/mft
<b>▶ 18 AWG</b>				
93351802*	2	0.286	7.3	45
93351803	3	0.300	7.6	55
93351804	4	0.324	8.2	67
93351805	5	0.349	8.9	79
93351807	7	0.376	9.6	100
93351809	9	0.432	11.0	125
93351812	12	0.480	12.2	157
93351818	18	0.596	15.1	244
93351825	25	0.686	17.4	319
93351850	50	0.940	23.9	622
<b>▶ 16 AWG</b>				
93351602*	2	0.306	7.8	52
93351603	3	0.321	8.2	70
93351604	4	0.348	8.8	81
93351605	5	0.376	9.6	96
93351607	7	0.412	10.5	126
93351608	8	0.440	11.2	137
93351609	9	0.473	12.0	152
93351612	12	0.527	13.4	196
93351616	16	0.613	15.6	273
93351618	18	0.646	16.4	300
93351619	19	0.646	16.4	310
93351625	25	0.746	18.9	395
93351634	34	0.884	22.5	544
93351641	41	0.945	24.0	654
93351650	50	1.025	26.0	756

item no.	no. of conductors incl. ground	outer-ø inch	outer-ø mm	cable weight ≈lbs/mft
<b>▶ 14 AWG</b>				
93351402*	2	0.346	8.8	65
93351403	3	0.364	9.2	88
93351404	4	0.396	10.1	112
93351405	5	0.430	10.9	130
93351407	7	0.472	12.0	169
93351409	9	0.578	14.7	236
93351412	12	0.644	16.4	297
93351418	18	0.744	18.9	417
93351425	25	0.904	23.0	596
<b>▶ 12 AWG</b>				
93351202*	2	0.385	9.8	99
93351203	3	0.403	10.2	120
93351204	4	0.440	11.2	150
93351205	5	0.479	12.2	189
93351207	7	0.526	13.4	240
<b>▶ 10 AWG</b>				
93351003	3	0.487	12.4	179
93351004	4	0.568	14.4	248
93351005	5	0.618	15.7	298
93351007	7	0.674	17.1	403
<b>▶ 8 AWG</b>				
93350803	3	0.662	16.8	309
93350804	4	0.728	18.5	388
93350805	5	0.826	21.0	465

item no.	no. of conductors incl. ground	outer-ø inch	outer-ø mm	cable weight ≈lbs/mft
<b>▶ 6 AWG</b>				
93350603	3	0.765	19.4	443
93350604	4	0.879	22.3	580
93350605	5	0.954	24.2	717
<b>▶ 4 AWG</b>				
93350403	3	0.966	24.5	696
93350404	4	1.061	26.9	845
93350405	5	1.179	29.9	1035
<b>▶ 2 AWG</b>				
93350203	3	1.114	28.3	977
93350204	4	1.160	29.5	1215
93350205	5	1.363	34.6	1575

\*2 conductor cable does not have ground  
\*2 conductor cables are rated UL TC only  
Other dimensions and colors are available on request



# Tray Cables for Industrial Applications

## TR 600 S CY gray

UV and oil resistant 90°C shielded flexible tray cable  
Type TC-ER, MTW, WTTCC, and CSA approved



SR FT4 OR AWM /II A/B 90C 1000V FT4 RoHS CE



Marking for TR 600 S CY gray 93361604:

SAB NORTH AMERICA TR 600 S CY 93361604 16 AWG/ 4C (UL) TC-ER 90C DRY 75C WET 600V SUN RES DIR BUR OIL RES /II OR WTTCC 1000V OR MTW "FLEXING" OR DP-1 OR AWM 2586 105°C CSA CIC-TC PVC/N 90°C DRY 75°C WET 600V -25°C SR FT4 OR AWM /II A/B 90C 1000V FT4 RoHS CE

### Construction:

<b>Conductor:</b>	bare copper strands class K (30 AWG multiple strands)
<b>Insulation:</b>	special formulated PVC/Nylon
<b>Color code:</b>	black conductors with consecutive white numbers; green/yellow ground from 3 conductors
<b>Stranding:</b>	in layers
<b>Wrapping:</b>	fleece tape
<b>Shielding:</b>	tinned copper braiding (85% coverage)
<b>Jacket material:</b>	special oil resistant pressure extruded PVC
<b>Jacket color:</b>	gray (RAL 7000)

### Outstanding features:



- flexible stranding for easy installation
- oil resistant meeting UL Oil Res I and II
- NFPA 79 for Industrial Machinery
- UL TC-ER (exposed run)
- CSA approved for TC
- Submersible pump (14 AWG ≥ 3 thru 7 cond.)
- WTTCC: Wind Turbine tray cable
- Class 1 Div 2 per NEC Article 501.4 (B)

### Technical data:

<b>Voltage:</b>	<b>UL-AWM / (UL) / CSA:</b> 600 V <b>(UL) WTTCC:</b> 1000 V
<b>Testing voltage:</b>	2500 V
<b>Min. bending radius:</b>	<i>fixed installation:</i> 6 x O.D. <i>free movement:</i> 8 x O.D.
<b>Temperature range:</b>	<b>UL-AWM</b> up to +105°C <i>static:</i> -40°C <b>(UL) / CSA:</b> up to +90°C
<b>Burning characteristics:</b>	(UL) / CSA FT4
<b>Oil resistance I &amp; II:</b>	yes
<b>Sunlight resistance:</b>	yes
<b>Exposed runs:</b>	yes
<b>Cold bend test:</b>	-40°C
<b>Direct burial:</b>	yes
<b>Machinery area:</b>	yes
<b>Approvals:</b>	UL TC-ER, UL MTW, UL AWM, UL WTTCC, CSA CIC-TC, CSA CIC, CSA AWM, CE, RoHS
<b>Absence of harmful substances:</b>	acc. to RoHS directive of the European Union see page O/30

item no.	no. of conductors incl. ground	outer-ø inch	outer-ø mm	cable weight ≈lbs/mft
<b>▶ 18 AWG</b>				
93361803	3	0.324	8.2	71
93361804	4	0.348	8.8	85
93361805	5	0.373	9.5	95
93361807	7	0.400	10.2	120
93361809	9	0.455	11.6	149
93361812	12	0.504	12.8	185
93361818	18	0.617	15.7	270
93361825	25	0.710	18.0	365
<b>▶ 16 AWG</b>				
93361603	3	0.345	8.8	83
93361604	4	0.372	9.4	100
93361605	5	0.400	10.2	116
93361607	7	0.430	10.9	145
93361609	9	0.492	12.5	187
93361612	12	0.579	14.7	245
93361618	18	0.664	16.9	335
93361625	25	0.770	19.6	445

item no.	no. of conductors incl. ground	outer-ø inch	outer-ø mm	cable weight ≈lbs/mft
<b>▶ 14 AWG</b>				
93361403	3	0.388	9.9	108
93361404	4	0.420	10.7	131
93361405	5	0.454	11.5	155
93361407	7	0.490	12.4	190
93361412	12	0.662	16.8	350
93361418	18	0.764	19.4	482
93361425	25	0.924	23.5	701
<b>▶ 12 AWG</b>				
93361203	3	0.427	10.8	145
93361204	4	0.464	11.8	178
93361205	5	0.506	12.9	210
<b>▶ 10 AWG</b>				
93361003	3	0.512	13.0	190
93361004	4	0.568	14.4	250
93361005	5	0.643	16.3	350
93361007	7	0.695	17.7	408

item no.	no. of conductors incl. ground	outer-ø inch	outer-ø mm	cable weight ≈lbs/mft
<b>▶ 8 AWG</b>				
93360804	4	0.759	19.3	447
<b>▶ 6 AWG</b>				
93360604	4	0.915	23.2	672
<b>▶ 4 AWG</b>				
93360404	4	1.097	27.9	993
<b>▶ 2 AWG</b>				
93360204	4	1.271	32.3	1455


2 conductor cable does not have ground  
Other dimensions and colors are available on request

# Tray Cables for Industrial Applications

## TR 850 S

UV and oil resistant 90°C flexible tray cable - flexible cord  
Type TC-ER and ST00W



W 105C 600V FT1 OR AWM I/II A/B 105C 1000V FT4 CE 



Marking for TR 850 S 8501205:

SAB NORTH AMERICA 12AWG/5C (UL) TYPE TC-ER 90C DRY 75C WET 600V SUN RES DIR BUR OIL RES I/II OR  
TYPE ST00W 105C 600V OR WTTC 1000V OR C(UL) CIC-TC PVC 600V FT4 --- CSA ST00W 105C 600V FT1 OR AWM I/II A/B 105C 1000V FT4 CE

### Construction:

<b>Conductor:</b>	bare copper strands class K
<b>Insulation:</b>	special formulated PVC
<b>Color code:</b>	3c- black, white, green/yellow; 4c- black, white, red, green/yellow; 5c- black, white red, brown, green/yellow; 7c- black numbered plus green/yellow ground
<b>Stranding:</b>	in layers
<b>Jacket material:</b>	special sunlight and oil resistant PVC
<b>Jacket color:</b>	black (RAL 9005)

### Technical data:

<b>Voltage:</b>	UL-TC / ST00W / CSA ST00W: 600 V (UL) WTTC / CSA AWM: 1000 V
<b>Testing voltage:</b>	2500 V
<b>Min. bending radius:</b>	<i>fixed installation:</i> 4 x O.D. <i>free movement:</i> 6 x O.D.
<b>Temperature range:</b>	UL / CSA ST00W (UL) / c(UL): up to +105°C up to +90°C -40°C
<b>static:</b>	
<b>Burning characteristics:</b>	(UL) / CSA FT4
<b>Oil resistance I &amp; II:</b>	yes
<b>Sunlight resistance:</b>	yes
<b>Exposed runs:</b>	yes
<b>Direct burial:</b>	yes
<b>Machinery area:</b>	yes
<b>Approvals:</b>	UL TC-ER, UL WTTC, UR AWM, c(UL) CIC-TC, CSA AWM, CE, RoHS
<b>Absence of harmful substances:</b>	acc. to RoHS directive of the European Union see page O/30

### Outstanding features:



- flexible cable for cable tray use even where sunlight resistance is required.
- UL ST00W / CSA ST00W
- Class I Div I for flexible use only

item no.	no. of conductors incl. ground	outer-ø inch	outer-ø mm	cable weight ≈lbs/mft
<b>▶ 18 AWG</b>				
08501803	3	0.363	9.2	77
08501804	4	0.394	10.0	95
08501805	5	0.462	11.7	133
08501807	7	0.495	12.6	157
<b>▶ 16 AWG</b>				
08501603	3	0.392	10.0	96
08501604	4	0.422	10.7	111
08501605	5	0.497	12.6	159
08501607	7	0.535	13.6	192
<b>▶ 14 AWG</b>				
08501403	3	0.541	13.7	170
08501404	4	0.584	14.8	208
08501405	5	0.656	16.7	264
08501407	7	0.708	18.0	324

item no.	no. of conductors incl. ground	outer-ø inch	outer-ø mm	cable weight ≈lbs/mft
<b>▶ 12 AWG</b>				
08501203	3	0.614	15.6	232
08501204	4	0.640	16.3	329
08501205	5	0.716	18.2	329
08501207	7	0.773	19.6	418
<b>▶ 10 AWG</b>				
08501003	3	0.696	17.7	307
08501004	4	0.742	18.8	378
08501005	5	0.819	20.8	445
08501007	7	0.850	21.6	544
<b>▶ 8 AWG</b>				
08500804	4	0.990	25.1	623
<b>▶ 6 AWG</b>				
08500604	4	1.120	28.4	828

item no.	no. of conductors incl. ground	outer-ø inch	outer-ø mm	cable weight ≈lbs/mft
<b>▶ 4 AWG</b>				
08500404	4	1.277	32.4	1174
<b>▶ 2 AWG</b>				
08500204	4	1.442	36.6	1578

Other dimensions and colors are available on request



# Tray Cables for Industrial Applications

## TRAY HD TPE

Heavy duty tray cable  
Type TC-ER



600V FT4 CSA AWM I/II A/B 90C 600V FT4 RoHS CE



Marking for TRAY HD TPE 94441842:

SAB NORTH AMERICA TRAY HD TPE 18 AWG 42c P/N 94441842 (UL) TC-ER 90C DRY 75C WET 600V OIL RES I/II SUN RES DIR BUR OR WTTC 1000V OR AWM 21270 105C 600V OR c (UL) CIC-TC PVC/N 600V FT4 CSA AWM I/II A/B 90C 600V FT4 RoHS CE

### Construction:

<b>Conductor:</b>	bare copper strands class K
<b>Insulation:</b>	special formulated PVC/nylon
<b>Color code:</b>	blue with numerical print* one with white-blue conductor and one green/yellow ground** *Alpha-Numeric Alternate and Inverted, ie: 1-ONE
<b>Stranding:</b>	in layers
<b>Jacket material:</b>	TPE
<b>Jacket color:</b>	gray (RAL 7000)

### Outstanding features:



- heavy duty tray cable and control and instrumentation cable
- UL-AWM recognized for 105°C
- extremely oil resistant
- WTTC: UL subject 2277
- TC: UL standard 1277
- CSA listed
- NFPA 79 for Industrial Machinery
- c(UL) CIC-TC FT4
- Class 1 Div 2 per NEC Article 501.4 (B)

### Technical data:

<b>Voltage:</b>	UL-AWM / (UL) /c(UL): 600 V (UL) WTTC: 1000 V
<b>Testing voltage:</b>	2500 V
<b>Min. bending radius:</b>	7.5 x O.D.
<b>Temperature range:</b>	UL-AWM (UL) / c(UL) / CSA-AWM: up to +105°C up to +90°C static: -40°C
<b>Burning characteristics:</b>	(UL) / CSA FT4
<b>Oil resistance I &amp; II:</b>	yes
<b>Exposed runs:</b>	yes
<b>Cold bend test:</b>	-40°C
<b>Approvals:</b>	UL TC-ER, UL AWM, UL WTTC, c(UL) CIC-TC, CSA AWM, CE, RoHS
<b>Absence of harmful substances:</b>	acc. to RoHS directive of the European Union see page O/30
<b>Alt. Color code:</b>	** Add B at the end of Part No. for Black conductors: black conductors with numbers; and green/yellow ground  ** Add R at the end of Part No. for Red conductors: red conductors with numbers; and green/yellow ground

item no.	no. of conductors incl. ground	outer-ø inch	outer-ø mm	cable weight ≈lbs/mft
<b>▶ 18 AWG</b>				
94441803	3	0.295	7.5	55
94441805	5	0.343	8.7	79
94441807	7	0.370	9.4	100
94441811	11	0.465	11.8	149
94441812	12	0.476	12.1	157
94441819	19	0.583	14.8	247
94441825	25	0.677	17.2	319
94441833	33	0.736	18.7	391
94441842	42	0.815	20.7	498
94441849	49	0.906	23.0	607
94441865	65	1.008	25.6	675

item no.	no. of conductors incl. ground	outer-ø inch	outer-ø mm	cable weight ≈lbs/mft
<b>▶ 16 AWG</b>				
94441603	3	0.323	8.2	70
94441605	5	0.409	10.4	96
94441607	7	0.539	13.7	166
94441611	11	0.555	14.1	191
94441612	12	0.634	16.1	196
94441619	19	0.642	16.3	307
94441625	25	0.736	18.7	395
94441633	33	0.815	20.7	475
94441642	42	0.949	24.1	612
94441649	49	1.004	25.5	748
94441665	65	1.122	28.5	998

2 conductor cable does not have ground  
Other dimensions and colors are available on request



### Possible on request:

- with black jacket as well as red conductors



# Tray Cables for Industrial Applications

## TR 600 HD

Heavy duty tray cable  
Type TC-ER



600V FT4 CSA AWM I/II A/B 90C 600V FT4 RoHS CE



Marking for TR 600 HD 32301604:

SAB NORTH AMERICA TR 600 HD 16 AWG 4c P/N 32301604 (UL) TC-ER 90C DRY 75C WET 600V OIL RES I/II SUN RES DIR BUR OR WTTTC 1000V OR AWM 21270 105C 600V OR c (UL) CIC-TC PVC/N 600V FT4 CSA AWM I/II A/B 90C 600V FT4 RoHS CE

### Construction:

<b>Conductor:</b>	bare copper strands class K
<b>Insulation:</b>	special formulated PVC/Nylon
<b>Color code:</b>	black with numerical print* and one green/yellow ground** *Alpha-Numeric Alternate and Inverted, ie: 1-One
<b>Stranding:</b>	in layers
<b>Jacket material:</b>	TPE
<b>Jacket color:</b>	orange

### Outstanding features:



- heavy duty tray cable and control and instrumentation cable
- UL-AWM recognized for 105°C
- extremely oil resistant
- WTTTC: UL subject 2277
- TC: UL standard 1277
- CSA listed
- NFPA 79 for Industrial Machinery
- c(UL) CIC-TC FT4
- Class 1 Div 2 per NEC Article 501.4 (B)

### Technical data:

<b>Voltage:</b>	UL-AWM / UL / c(UL): 600 V (UL) WTTTC: 1000 V
<b>Testing voltage:</b>	2500 V
<b>Min. bending radius:</b>	7.5 x O.D.
<b>Temperature range:</b>	UL-AWM (UL) / c(UL) / CSA-AWM: static: up to +105°C / up to +90°C -40°C
<b>Burning characteristics:</b>	(UL) / CSA FT4
<b>Oil resistance I &amp; II:</b>	yes
<b>Exposed runs:</b>	yes
<b>Cold bend test:</b>	-40°C
<b>Approvals:</b>	UL TC-ER, UL AWM, UL WTTTC, c(UL) CIC-TC, CSA AWM, CE, RoHS
<b>Absence of harmful substances:</b>	acc. to RoHS directive of the European Union see page O/30
<b>Alt. Color code:</b>	** Add B at the end of Part No. for Blue conductors: blue conductors with numbers; one white-blue conductor and green/yellow ground  ** Add R at the end of Part No. for Red conductors: red conductors with numbers; one white-red conductor and green/yellow ground

item no.	no. of conductors incl. ground	outer-ø inch	outer-ø mm	cable weight ≈lbs/mft
<b>▶ 18 AWG</b>				
32301803	3	0.300	7.6	55
32301804	4	0.324	8.2	67
32301805	5	0.349	8.9	79
32301807	7	0.376	9.6	100
32301812	12	0.480	12.2	157
32301818	18	0.596	15.1	244
32301825	25	0.685	17.4	319
<b>▶ 16 AWG</b>				
32301603	3	0.321	8.2	70
32301604	4	0.348	8.8	81
32301605	5	0.376	9.6	96
32301607	7	0.412	10.5	166
32301612	12	0.527	13.4	196
32301618	18	0.646	16.4	300
32301625	25	0.746	18.9	395

item no.	no. of conductors incl. ground	outer-ø inch	outer-ø mm	cable weight ≈lbs/mft
<b>▶ 14 AWG</b>				
32301403	3	0.364	9.2	88
32301404	4	0.396	10.1	92
32301405	5	0.434	11.0	130
32301407	7	0.472	12.0	169
32301412	12	0.644	16.4	297
<b>▶ 12 AWG</b>				
32301203	3	0.403	10.2	120
32301204	4	0.440	11.2	150
32301205	5	0.479	12.2	182
32301207	7	0.526	13.4	240
32301212	12	0.719	18.3	420
<b>▶ 10 AWG</b>				
32301003	3	0.506	12.9	179
32301004	4	0.590	15.0	248
32301005	5	0.642	16.3	298

item no.	no. of conductors incl. ground	outer-ø inch	outer-ø mm	cable weight ≈lbs/mft
<b>▶ 8 AWG</b>				
32300804	4	0.756	19.2	385
32300805	5	0.826	21.0	465
<b>▶ 6 AWG</b>				
32300603	3	0.767	19.5	426
32300604	4	0.878	22.3	580
<b>▶ 4 AWG</b>				
32300404	4	1.061	26.9	845
32300405	5	1.179	29.9	1035
<b>▶ 2 AWG</b>				
32300204	4	1.235	31.4	1278
32300205	5	1.363	34.6	1575
<b>▶ 1 AWG</b>				
32300104	4	1.403	35.6	1605

2 conductor cable does not have ground  
Other dimensions and colors are available on request



### Possible on request:

- with gray or black jacket as well as blue or red conductors

\* For blue conductors add B at end of P/N, for red add an R, ie 32301404B

# Tray Cables for Industrial Applications

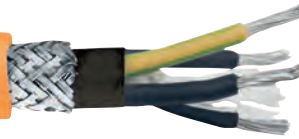
## TR 600 C HD

Shielded heavy duty tray cable

Type TC-ER



600V FT4 CSA AWM I/II AB SOC 90C 600V FT4 RoHS



Marking for TR 600 C HD 32401604:

SAB NORTH AMERICA TR 600 C HD 16 AWG 4c P/N 32401604 (UL) TC-ER 90C DRY 75C WET 600V OIL RES I/II SUN RES DIR BUR OR WTTC 1000V OR AWM 21270 105C 600V DR c (UL) CIC-TC PVC/N 600V FT4 CSA AWM I/II A/B 90C 600V FT4 RoHS CE

### Construction:

<b>Conductor:</b>	bare copper strands class K
<b>Insulation:</b>	special formulated PVC/Nylon
<b>Color code:</b>	black with numerical print* and one green/yellow earth ground** *Alpha-Numeric Alternate and Inverted, ie: 1-ONE
<b>Stranding:</b>	in layers
<b>Inner jacket:</b>	PVC, color black
<b>Shielding:</b>	tinned copper braiding, 85% coverage
<b>Jacket material:</b>	TPE
<b>Jacket color:</b>	orange

### Outstanding features:



- heavy duty tray cable and control and instrumentation cable
- UL-AWM recognized for 105°C
- extremely oil resistant
- WTTC: UL subject 2277
- TC: UL standard 1277
- CSA listed
- NFPA 79 for Industrial Machinery
- c(UL) CIC-TC FT4
- Class 1 Div 2 per NEC Article 501.4 (B)

### Technical data:

<b>Voltage:</b>	UL-AWM / (UL) / c(UL): 600 V (UL) WTTC: 1000 V
<b>Testing voltage:</b>	2500 V
<b>Min. bending radius:</b>	7.5 x O.D.
<b>Temperature range:</b>	UL-AWM (UL) / c(UL) / CSA-AWM: up to +105°C up to +90°C static: -40°C
<b>Burning characteristics:</b>	(UL) / CSA FT4
<b>Oil resistance I &amp; II:</b>	yes
<b>Exposed runs:</b>	yes
<b>Cold bend test:</b>	-40°C
<b>Approvals:</b>	UL TC-ER, UL AWM, UL WTTC, c(UL) CIC-TC, CSA AWM, CE, RoHS
<b>Absence of harmful substances:</b>	acc. to RoHS directive of the European Union see page O/30
<b>Alt. Color code:</b>	** Add B at the end of Part No. for Blue conductors: blue conductors with numbers; one white-blue conductor and green/yellow ground  ** Add R at the end of Part No. for Red conductors: red conductors with numbers; one white-red conductor and green/yellow ground

item no.	no. of conductors incl. ground	outer-ø inch	outer-ø mm	cable weight ≈lbs/mft
<b>▶ 18 AWG</b>				
32401803	3	0.385	9.8	99
32401804	4	0.408	10.4	113
32401805	5	0.433	11.0	126
32401807	7	0.460	11.7	151
32401812	12	0.599	15.2	250
32401818	18	0.700	17.8	352
32401825	25	0.783	19.9	449
<b>▶ 16 AWG</b>				
32401603	3	0.406	10.3	112
32401604	4	0.413	10.5	107
32401605	5	0.460	11.7	154
32401607	7	0.490	12.4	182
32401612	12	0.640	16.3	301
32401618	18	0.750	19.0	425
32401625	25	0.882	22.4	569

item no.	no. of conductors incl. ground	outer-ø inch	outer-ø mm	cable weight ≈lbs/mft
<b>▶ 14 AWG</b>				
32401403	3	0.450	11.4	138
32401404	4	0.480	12.2	149
32401407	7	0.584	14.8	257
<b>▶ 12 AWG</b>				
32401204	4	0.523	13.3	217
32401205	5	0.597	15.2	272
<b>▶ 10 AWG</b>				
32401004	4	0.698	17.7	366
<b>▶ 8 AWG</b>				
32400804	4	0.930	23.6	579
<b>▶ 6 AWG</b>				
32400604	4	1.023	26.0	793

item no.	no. of conductors incl. ground	outer-ø inch	outer-ø mm	cable weight ≈lbs/mft
<b>▶ 4 AWG</b>				
32400404	4	1.204	30.6	1157
<b>▶ 2 AWG</b>				
32400204	4	1.382	35.1	1579
<b>▶ 1 AWG</b>				
32400104	4	1.548	39.3	2815
2 conductor cable does not have ground				
Other dimensions and colors are available on request				



### Possible on request:

- with gray or black jacket as well as blue or red conductors

\* For blue conductors add B at end of P/N, for red add an R, ie 32401404B

# Tray Cables for Industrial Applications

## TR 600 Auto HD

Continuous flex heavy duty tray cable

Type TC-ER



Marking for TR 600 Auto HD 32321604:

SAB NORTH AMERICA TR 600 Auto HD 16AWG/4c P/N 32321604 (UL) TC-ER 90C DRY 75 C WET 600V OIL RES I/II SUN RES DIR BUR OR WTTTC 1000V OR AWM 21270 105C 600V OR c (UL) CIC-TC PVC/N 600V FT4 CSA AWM I/II A/B 90C 600V FT4 RoHS CE

### Construction:

<b>Conductor:</b>	bare copper strands class M
<b>Insulation:</b>	special formulated PVC/Nylon
<b>Color code:</b>	black with numerical print* and one green/yellow earth ground** *Alpha-Numeric Alternate and Inverted, ie: 1-ONE
<b>Stranding:</b>	in layers with fleece tape separator
<b>Jacket material:</b>	TPE
<b>Jacket color:</b>	black (RAL 9005)

### Outstanding features:

- heavy duty tray cable and control and instrumentation cable
- UL-AWM 21270 recognized for 105°C
- extremely oil resistant
- WTTTC: UL subject 2277
- TC: UL standard 1277
- CSA listed
- NFPA 79 for Industrial Machinery
- c(UL) CIC-TC FT4
- continuous flex applications
- Class 1 Div 2 per NEC Article 501.4 (B)

### Technical data:

<b>Voltage:</b>	UL-AWM / (UL) / c(UL): 600 V (UL) WTTTC: 1000 V
<b>Testing voltage:</b>	2500 V
<b>Min. bending radius:</b>	<i>fixed installation:</i> 4 x O.D. <i>free movement:</i> 6 x O.D. <i>continuous flexing:</i> 10 x O.D.
<b>Temperature range:</b>	UL-AWM up to +105°C static: -40°C (UL) / c(UL) / CSA-AWM: up to +90°C
<b>Cold bend test:</b>	-40°C
<b>Burning characteristics:</b>	(UL) / CSA FT4
<b>Oil resistance I &amp; II:</b>	yes
<b>Exposed runs:</b>	yes
<b>Approvals:</b>	UL TC-ER, UL AWM, UL WTTTC, c(UL) CIC-TC, CSA AWM, CE, RoHS
<b>Absence of harmful substances:</b>	acc. to RoHS directive of the European Union see page O/30
<b>Alt. Color code:</b>	** Add B at the end of Part No. for Blue conductors: blue conductors with numbers; one white-blue conductor and green/yellow ground  ** Add R at the end of Part No. for Red conductors: red conductors with numbers; one white-red conductor and green/yellow ground

item no.	no. of conductors incl. ground	outer-ø inch	mm	cable weight ≈lbs/mft
<b>▶ 18 AWG</b>				
32321803	3	0.302	7.7	48
32321804	4	0.325	8.3	58
32321805	5	0.350	8.9	75
32321807	7	0.405	10.3	94
32321812	12	0.480	12.2	134
32321818	18	0.589	15.0	214
32321825	25	0.714	18.1	307
<b>▶ 16 AWG</b>				
32321603	3	0.336	8.5	63
32321604	4	0.364	9.2	77
32321605	5	0.394	10.0	98
32321607	7	0.458	11.6	125
32321612	12	0.580	14.7	204
32321618	18	0.669	17.0	300
32321625	25	0.819	20.8	423

item no.	no. of conductors incl. ground	outer-ø inch	mm	cable weight ≈lbs/mft
<b>▶ 14 AWG</b>				
32321403	3	0.361	9.2	82
32321404	4	0.391	9.9	102
32321405	5	0.423	10.7	125
32321407	7	0.495	12.6	169
32321412	12	0.625	15.9	282
<b>▶ 12 AWG</b>				
32321203	3	0.420	10.7	115
32321204	4	0.458	11.6	145
32321205	5	0.499	12.7	189
32321207	7	0.621	15.8	264
32321212	12	0.742	18.8	398
<b>▶ 10 AWG</b>				
32321003	3	0.506	12.9	179
32321004	4	0.590	15.0	248
32321005	5	0.642	16.3	298

item no.	no. of conductors incl. ground	outer-ø inch	mm	cable weight ≈lbs/mft
<b>▶ 8 AWG</b>				
32320804	4	0.756	19.2	385
32320805	5	0.826	21.0	465
<b>▶ 6 AWG</b>				
32320603	3	0.767	19.5	426
32320604	4	0.879	22.3	580
<b>▶ 4 AWG</b>				
32320404	4	1.061	26.9	845
32320405	5	1.177	29.9	1035
<b>▶ 2 AWG</b>				
32320204	4	1.235	31.4	1278
32320205	5	1.363	34.6	1575

2 conductor cable does not have ground  
Other dimensions and colors are available on request

**Possible on request:**

- with gray jacket as well as blue or red conductors

\* For blue conductors add B at end of P/N, for red add an R, ie 32321404B





# Tray Cables for Industrial Applications

## TR 600 Auto C HD

Shielded continuous flex heavy duty tray cable

Type TC-ER



CSA AWM I/II A/B 90C 600V FT4 RoHS CE



Marking for TR 600 Auto C HD 32421604:

SAB NORTH AMERICA TR 600 Auto HD 16AWG/4c P/N 32421604 (UL) TC-ER 90C DRY 75 C WET 600V OIL RES I/II SUN RES DIR BUR OR WTTC 1000V OR AWM 21270 105C 600V OR c(UL) CIC-TC PVC/N 600V FT4 CSA AWM I/II A/B 90C 600V FT4 RoHS CE

### Construction:

<b>Conductor:</b>	bare copper strands class M
<b>Insulation:</b>	special formulated PVC/Nylon
<b>Color code:</b>	black with numerical print* and one green/yellow earth ground** *Alpha-Numeric Alternate and Inverted, ie: 1-ONE
<b>Stranding:</b>	in layers
<b>Wrapping:</b>	fleece binder
<b>Shielding:</b>	tinned copper braiding (85% coverage)
<b>Separator:</b>	tissue tape
<b>Jacket material:</b>	TPE
<b>Jacket color:</b>	black (RAL 9005)

### Outstanding features:

- heavy duty tray cable and control and instrumentation cable
- UL-AWM 21270 recognized for 105°C
- extremely oil resistant
- WTTC: UL subject 2277
- TC: UL standard 1277
- CSA listed
- NFPA 79 for Industrial Machinery
- c(UL) CIC-TC FT4
- continuous flex applications
- Class 1 Div 2 per NEC Article 501.4 (B)

### Technical data:

<b>Voltage:</b>	UL-AWM / (UL) / c(UL): 600 V (UL) WTTC: 1000 V
<b>Testing voltage:</b>	2500 V
<b>Min. bending radius:</b>	fixed installation: 5 x O.D. free movement: 10 x O.D. continuous flexing: 12 x O.D.
<b>Temperature range:</b>	UL-AWM up to +105°C static: -40°C (UL) / c(UL) / CSA-AWM: up to +90°C
<b>Cold bend test:</b>	-40°C
<b>Burning characteristics:</b>	(UL) / CSA FT4
<b>Oil resistance I &amp; II:</b>	yes
<b>Exposed runs:</b>	yes
<b>Approvals:</b>	UL TC-ER, UL AWM, UL WTTC, c(UL) CIC-TC, CSA AWM, CE, RoHS
<b>Absence of harmful substances:</b>	acc. to RoHS directive of the European Union see page O/30
<b>Alt. Color code:</b>	** Add B at the end of Part No. for Blue conductors: blue conductors with numbers; one white-blue conductor and green/yellow ground  ** Add R at the end of Part No. for Red conductors: red conductors with numbers; one white-red conductor and green/yellow ground

item no.	no. of conductors incl. ground	outer-ø inch	outer-ø mm	cable weight ≈lbs/mft
▶ <b>18 AWG</b>				
32421803	3	0.322	8.2	45
32421804	4	0.345	8.8	85
32421807	7	0.425	10.8	120
32421812	12	0.500	12.7	185
32421818	18	0.609	15.5	260
32421825	25	0.714	18.1	307
▶ <b>16 AWG</b>				
32421603	3	0.356	9.0	78
32421604	4	0.384	9.8	100
32421605	5	0.414	10.5	127
32421607	7	0.478	12.1	145
32421612	12	0.600	15.2	245
32421618	18	0.669	17.0	337
32421625	25	0.883	22.4	541

item no.	no. of conductors incl. ground	outer-ø inch	outer-ø mm	cable weight ≈lbs/mft
▶ <b>14 AWG</b>				
32421403	3	0.381	9.7	108
32421404	4	0.411	10.4	123
32421405	5	0.443	11.3	147
32421407	7	0.515	13.1	185
▶ <b>12 AWG</b>				
32421204	4	0.478	12.1	178
32421205	5	0.519	13.2	210
32421207	7	0.586	14.9	272
▶ <b>10 AWG</b>				
32421004	4	0.613	15.6	280
32421005	5	0.673	17.1	350
▶ <b>8 AWG</b>				
32420804	4	0.785	19.9	450

item no.	no. of conductors incl. ground	outer-ø inch	outer-ø mm	cable weight ≈lbs/mft
▶ <b>6 AWG</b>				
32420604	4	0.914	23.2	630
▶ <b>4 AWG</b>				
32420404	4	1.094	27.8	945
▶ <b>2 AWG</b>				
32420204	4	1.264	32.1	1450

2 conductor cable does not have ground  
Other dimensions and colors are available on request



Possible on request:  
● with blue or red conductors

\* For blue conductors add B at end of P/N, for red add an R, ie 32421404B



# Manufacturing Capabilities & Cord Grips

## SPECIALTY CABLES

Engineered solutions to your exact requirements

### Conductor Materials:

- Bare copper
- Tinned copper
- Silver plated copper
- Nickel plated copper
- Nickel
- Nickel pure
- Compensating cable alloys

### Conductor Sizes:

- 0.14 mm<sup>2</sup> - 300 mm<sup>2</sup> (26 AWG to 500 MCM)
- variety of stranding styles

### Insulation and Jacketing Materials:

- PVC (many varieties)
- Polyethylene
- Polypropylene
- TPE
- Fiberglass
- Besilen®/Silicone
- Pi foil
- FEP, ETFE, PFA, PTFE
- SABIX® zero halogen
- Polyurethane

### Conductor Count Ranges:

- unshielded - up to 125 conductors
- shielded - up to 100 conductors

### Temperature Ranges: (based on material)

- Thermoplastic Elastomers -50°C up to +145°C
- Besilen®/Silicone -40°C up to +220°C
- FEP, ETFE, PFA, PTFE -90°C up to +260°C
- Halogen-free -50°C up to +220°C
- Fiberglass up to +600°C

### Shielding and Braiding Materials:

- Bare copper
- Tinned copper
- Galvanized steel
- Stainless steel
- Aluminum foil
- Fiberglass
- Aramid



### Approvals:

- UL, CSA, CE, EAC, VDE, HAR, IEC, EN, ISO, DNV-GL, LR, ABS, RINA, RMRS, BSI

## CORD GRIPS

Secure & Protect Your Cable

### CG 100 POLYAMIDE CORD GRIPS

Dome cap, black or gray available in NPT, PG, or Metric thread

Liquid tight seal, fast and easy installation, wide clamping range, multi-purpose applications, easy handling.



### CG 200 POLYAMIDE CORD GRIPS

Flex cap, black or gray available in NPT, PG, or Metric thread

Strain relief gland offers maximum protection against conductor fatigue caused by flexing cables.



### CG 300 NICKEL PLATED BRASS CORD GRIPS

Available in NPT, PG, or Metric thread

Impact resistant, suitable for industrial applications, water tight, and corrosion resistant.



### CG 350 STAINLESS STEEL CORD GRIPS

Available in NPT, PG, or Metric thread and SS 303 or SS 316

Impact resistant, suitable for industrial applications, water tight, and corrosion resistant.



### EMC-2 GROUNDING CORD GRIPS

Nickel plated brass EMC cable gland available in NPT, PG, or Metric thread

Optimal grounding of shielded cable with integral grounding springs, easy installation, water tight, and impact resistant



### EMC-4 GROUNDING CORD GRIPS

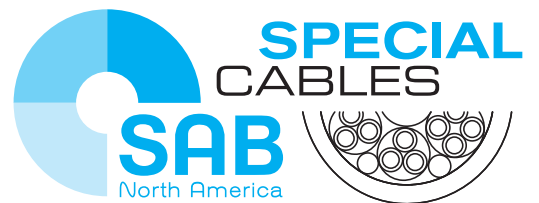
Nickel plated brass, EMC cable gland, vibration proof, available in NPT, PG, or Metric thread

Optimal grounding of shielded cable with integral grounding springs. Bidirectional cable installation allows the cable to move without damage to the shield.



## Accessories & Fittings

Enlargers	Reducers	Hole Plugs	Multi-Hole Bushing	
Vent Gland & Plugs			Locknuts	



344 Kaplan Drive  
Fairfield, NJ 07004  
Toll Free: 866-722-2974  
[www.sabcable.com](http://www.sabcable.com)  
[info@sabcable.com](mailto:info@sabcable.com)