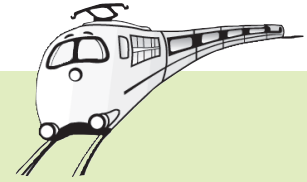
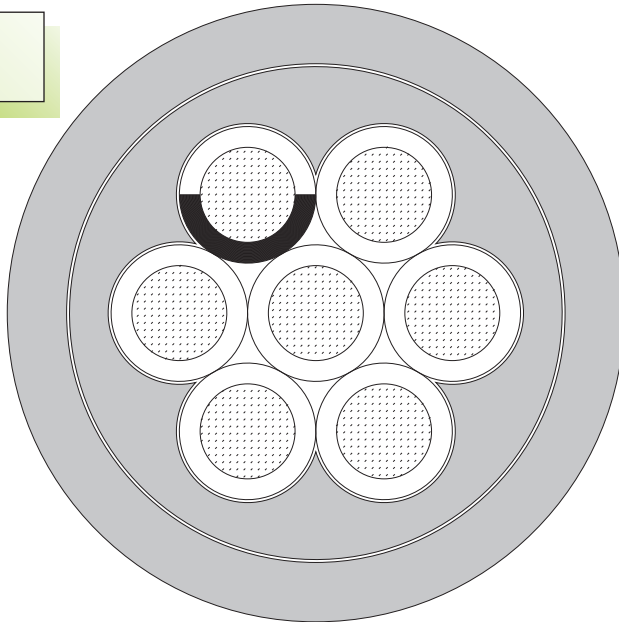


# HYBRID TORSION CABLES

## SABIX® A 883 Twisting and torsional connection cable



**Especially for use  
in rail vehicles,  
e. g. bogies and boxes**

C  
9

Marking for SABIX® A 883 08830715:  
SAB BRÖCKSKES · D-VIERSEN ·  
SABIX® A 883 Ø 7 x 1,5 mm<sup>2</sup> CE

SABIX® A 883 is a halogen free special made cable for use in transportation vehicles and locomotives. The special PUR outer jacket and the TPE conductors are used where combined twisting and bending stress occur within railcars and boxes. This cable is also available without a green/yellow ground conductor.

### Construction:

<b>Conductor:</b>	tinned copper strands acc. to IEC 60228, EN 60228, VDE 0295, class 6
<b>Insulation:</b>	TPE
<b>Color code:</b>	black conductors with consecutive numbers acc. to EN 50334; green-yellow earth wire from 3 conductors
<b>Stranding:</b>	in layers
<b>Inner jacket:</b>	SABIX®
<b>Jacket material:</b>	PUR
<b>Jacket color:</b>	black

### Outstanding features:

- ▶ for the use in rail vehicles, e. g. bogies and boxes
- ▶ also without earth wire possible

### Technical data:

<b>Nominal voltage:</b>	U <sub>0</sub> /U 300/500 V
<b>A.C. testing voltage:</b>	conductor/conductor 2000 V
<b>Min. bending radius</b>	
<i>fixed installation:</i>	4 x O.D.
<i>free movement:</i>	6 x O.D.
<b>Temperature range</b>	
<i>static:</i>	-50/+85 °C
<i>flexing:</i>	-40/+85 °C
<b>Torsion angle:</b>	± 15°
<b>Zero halogen:</b>	acc. to DIN VDE 0472 part 815 and IEC 60754-1
<b>Burning characteristics:</b>	flame retardant and self-extinguishing acc. to IEC 60332-1-2 and EN 60332-1-2
<b>UV resistance:</b>	good
<b>Ozone resistance:</b>	good
<b>Oil resistance:</b>	good
<b>Weather resistance:</b>	good
<b>Absence of harmful substances:</b>	acc. to RoHS-guideline 2002/95/EG as well as GefStoffV appendix IV-no. 24, see page N/25

item no.	no. of conductors incl. ground	nominal outer-Ø inch	nominal outer-Ø mm	cable weight ≈ lbs/mft	item no.	no. of conductors incl. ground	nominal outer-Ø inch	nominal outer-Ø mm	cable weight ≈ lbs/mft	item no.	no. of conductors incl. ground	nominal outer-Ø inch	nominal outer-Ø mm	cable weight ≈ lbs/mft
▶ <b>16 AWG (27-29/30) • 1.50 mm<sup>2</sup></b>					▶ <b>14 AWG (46/30) • 2.50 mm<sup>2</sup></b>					▶ <b>12 AWG (52/28) • 4.00 mm<sup>2</sup></b>				
08830215	2	0.319	8.1	62	08830325	3	0.382	9.7	106	08830540	5	0.535	13.6	225
08820315	3	0.331	8.4	72	08830425	4	0.413	10.5	129	Other dimensions and colors are possible on request.				
08830415	4	0.354	9.0	86	08830525	5	0.453	11.5	157					
08830715	7	0.409	10.4	127	08830725	7	0.480	12.2	196					
08831815	18	0.598	15.2	280										

E-mail: [info@sabcable.com](mailto:info@sabcable.com)



Web site: [www.sabcable.com](http://www.sabcable.com)